

INTERfit

White

Black

Softsun

Silver

Translucent

**½ f stop
Translucent**

UK:

Interfit Photographic Ltd
Unit 4 Cleton Business Park
Cleton Street, Tipton,
West Midlands, DY4 7TR
Tel: +44 (0)121 522 4800

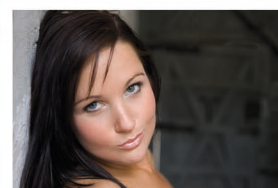
USA:

Interfit Photographic Ltd
420 Industrial Court West
Villa Rica, GA 30180.
Tel: (Toll Free) 1-866 947 9796

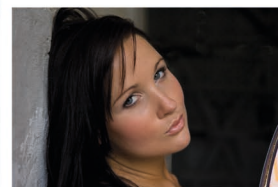
www.interfitphotographic.com

INTERfit

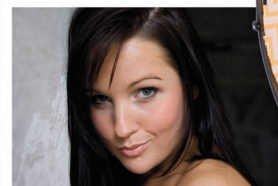
Expanding your creativity



White



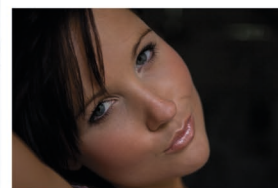
Soft Sun



Silver



Translucent



Black



**INTERfit
Lighting**

Guide to 5 in 1 Reflector arm kit

Models covered

INT273

Folding the Reflector

Folding the Reflector for storage is simple follow each of the steps below.

Fig 1



As shown in Fig 1 hold the Reflector with both hands opposed to each other, twist right hand only though 180°



The reflector can now be stored for future use or transport in the supplied zip up pouch.

Reflector arm components

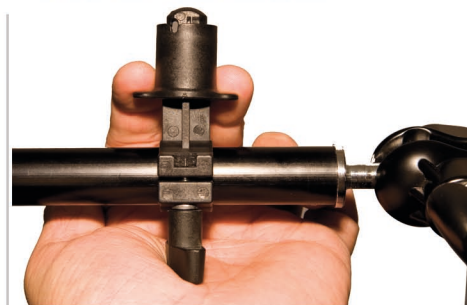


Rim attachment clips

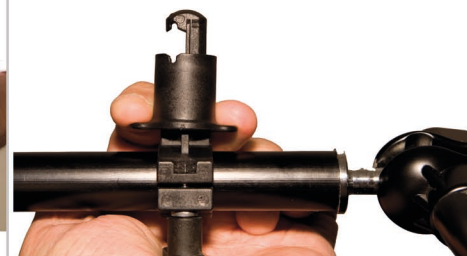
Multi-Directional adjustment arm and bracket

Stand clamp

Reflector attachments



To attach a Reflector to the arm, hold the Rim attachment clip as shown in and apply downward pressure open the jaws of the clip. Place the Reflectors rim between the jaws and close until a firm grip is in place.



Repeat this on the other end of the reflector and position accordingly.

The multi directional arm is held in place by tightening the knob above the stand clamp.

Reflective surfaces



White

Soft Sun

Silver

Translucent

Black

White, is the softest light reflector, ideal for use in the studio and outdoors. Reflected light fill = 1 f stop.

Soft Sun, soft light reflector with a warm tone ideally suited to digital cameras. Reflected light fill = 1 f stop.

Silver, is ideal on an overcast day to add more light into the shadow areas or in the studio when high contrast lighting is required. Reflected light fill = 2 f stops.

Translucent, reduces high contrasting lighting on sunny or bright days and softens shadow areas by up to 1.5 f stops. Ideal for reducing squinting on bright sunny days. Can also be used as a secondary diffuser in the studio for soft spectral highlights on shiny objects.

Black reduces reflected light levels by 2.5 f stops to create high contrast images.