

400 ISO Film Comparison

All film was exposed at 400 ISO and developed in Fotospeed FD10 film developer (1+9) for the recommended time.

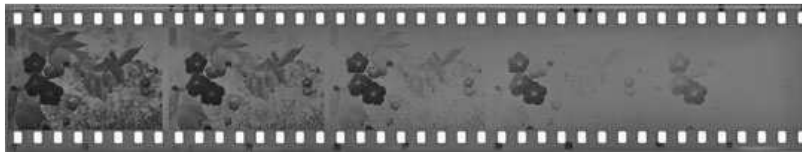
Film strips (exposure latitude, base clarity)



Rollei Retro 400S



Legacy Pro 400



Fomapan 400



Kodak Tri-X 400



Ilford HP5+

Full Images (tonal separation, contrast)



Rollei Retro 400S



Legacy Pro 400



Fomapan 400



Kodak Tri-X 400

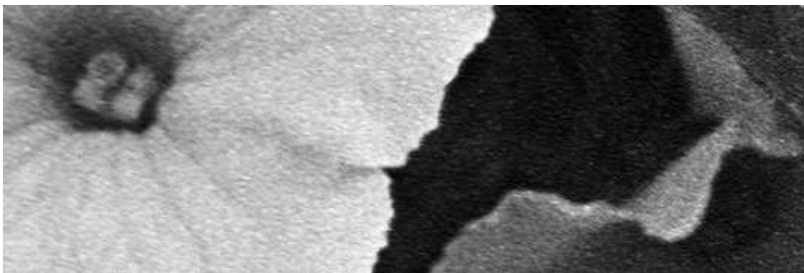


Ilford HP5+

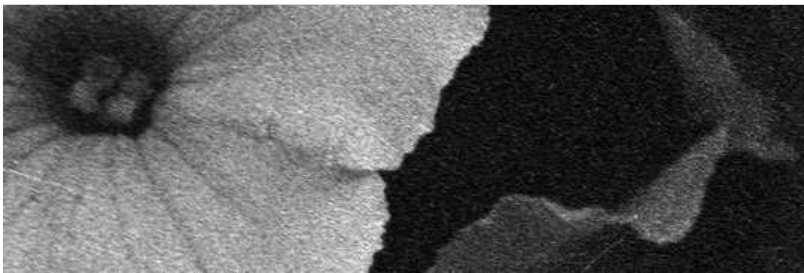
2900dpi Crops (grain, definition)



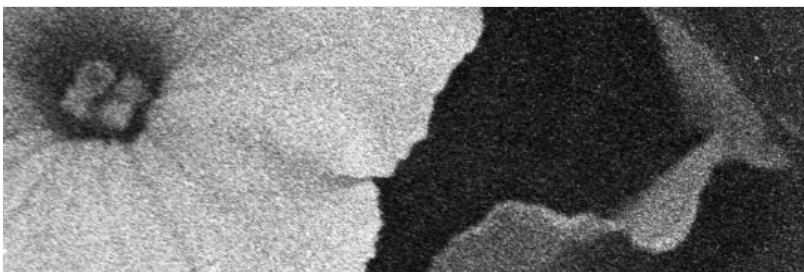
Rollei Retro 400S



Legacy Pro 400



Fomapan 400



Kodak Tri-X 400



Ilford HP5+

No sharpening or manipulation has been applied to these images.

